

SEK-CAP Early Childhood Services

401 N. Sinnet, PO Box 128
Girard, KS 66743
620.724.8204

Locations

Arma

211 N. West, 66712
620.347.8461

Chanute

115 S. Gretchen, 66720
620.431.2789

Coffeyville

200 S. Walnut, 67337
620.251.1147

Fort Scott

10 W. Fourth St., 66701
620.223.4440

Galena

514 Chicago, PO Box 276, 66739
620.783.2154

Independence

900 E. Poplar, 67301
620.331.6140

Iola

525 Kennedy, PO Box 812, 66749
620.365.7189

Neodesha

1103 N. 6th, PO Box 156, 66757
620.325.2813

Oswego

201 Commercial, PO Box 183,
67356
620.795.2102

Pittsburg

520 E. 20th, 66762
620.231.5790

Pittsburg: Options

212 W. 5th Street, 66762
620.232.9500

Parsons

3501 Mosher Rd., 67357
620.421.3930

Riverton

6884 SE Hwy 66, PO Box 27,
66770
620.848.3679

Scammon

713 E. 2nd, Box 6, 66773
620.479.3391



Recipient of the Award for Excellence in Community Action

EARLY CHILDHOOD YEAR END REPORT

2010-2011 SCHOOL YEAR



Promise of Community Action

Community Action changes people’s lives, embodies the spirit of hope, improves communities, and makes America a better place to live. We care about the entire community and we are dedicated to helping people help themselves and each other.

SEK-CAP’s Mission

Uniting staff, individuals, families, and community partners to provide quality, comprehensive services through compassionate, respectful relationships.

Early Childhood Services

SEK-CAP, Inc. provides Head Start and Early Head Start services in 12 counties in southeast Kansas. There are 15 centers across the service area with 40 Head Start classes and 6 Early Head Start classes. The Home-Based option has 10 Head Start Home Visitors and 22 Early Head Start Home Visitors serving a total of 888 children in need. In 3 communities, SEK-CAP, Inc. has partnered with local school districts to provide Head Start services (Arma, Ft. Scott, and Coffeyville) serving 130 students.

Location of Early Childhood Services



			Linn HS Home Based
	Woodson HS Center	Allen HS Center HS Home Based	Bourbon HS Center HS Home Based EHS
Elk HS Home Based	Wilson HS Center HS Home Based	Neosho HS Center EHS	Crawford HS Center HS Home Based EHS
Chautauqua HS Home Based	Montgomery HS Center HS Home Based EHS	Labette HS Center HS Home Based EHS	Cherokee HS Center EHS

SEK-CAP, Inc. Introduction and Program Highlights

Introduction



The SEK-CAP Head Start/Early Head Start programs provide children (from prenatal to age 5) and their families a variety of opportunities that may not be afforded to them otherwise. It is a comprehensive, child development program concerned with the health, education, and welfare of its participants. SEK-CAP provides services in the areas of education, nutrition, medical, dental, and mental health for 888 children.

Program Highlights (for 2010)

- ✦ 89% of Head Start students and 77% of Early Head Start students had age-appropriate immunizations.
- ✦ 96% of Head Start students and 91% of Early Head Start students had health insurance.
- ✦ 100% of pregnant mothers received pre-natal education on fetal development.
- ✦ 100% of Head Start students and 83% of Early Head Start Students had continuous, accessible dental care.
- ✦ 48% of Head Start families and 52% of Early Head Start families had 2 parents.
- ✦ 47% of Head Start parents and 43% of Early Head Start families had a high school/GED diploma.
- ✦ 6% of Head Start and 9% of Early Head Start families experienced homelessness during the year.

SEK-CAP, Inc. Parent Engagement and Awards

Engaging Parents

At SEK-CAP, parents are engaged in their child's education. Parents are given ideas to increase involvement with their children, such as:

- ✦ Contributing to their child's individual goal development by completing of developmental screenings throughout the program year.
- ✦ Following through on home activities designed with teaching staff to help children meet individual goals.
- ✦ Providing ideas for implementation of curriculum goals throughout the program year.
- ✦ The opportunity to contribute their child's work samples from home for inclusion in the child's portfolio.
- ✦ Participating in the literacy goals through home activities.
- ✦ Volunteering in the classroom.
- ✦ Participating in home visits and parent/teacher conferences throughout the year.
- ✦ Ensuring their child attends class on a regular basis.
- ✦ Communicating with classroom staff regarding home events that may effect the child's classroom performance.
- ✦ Participating in Parents and Children Together events and parent meetings.
- ✦ Participating in parent and child activities in the classroom.
- ✦ Visiting the classroom during mealtime.
- ✦ Participating in the continuous self-assessment of the program.
- ✦ Serving on the Policy Council.



SEK-CAP, Inc. Head Start and Early Head Start Programs

Parent Awards

- ✦ Autumn Dickens, Policy Council member and Head Start parent was recognized as our Personal Responsibility and Achievement Award and Kansas Association Community Action Program's Parent of the Year.
- ✦ Martha Lawson was our State, Regional, and National winner of the Rev. Willard Clayton Memorial Scholarship for Head Start Parents.
- ✦ Stacey Burke won the Curtis Pride Scholarship.
- ✦ Michael McGee won the Kansas Head Start Association's Father of the Year Award.

SEK-CAP, Inc. Head Start and Early Head Start Outcomes

The SEK-CAP Head Start/Early Head Start programs provide children (from prenatal to age 5) and their families a variety of opportunities that may not be afforded to them otherwise.

They are comprehensive, child development programs concerned with the health, education and welfare of its participants.

SEK-CAP provides services in the areas of:

- ✦ education,
- ✦ nutrition,
- ✦ medical,
- ✦ dental, and
- ✦ mental health



The program provides a full year, a part year, and a home-based option. Students attend the full year program for 6 hours of class time 5 days a week. The part year program has students attend class 3.5 hours, four days a week.

Families are eligible either through Head Start criteria or identification of risk factors which include: single parent family, teen parents, no parental high school diploma or GED, limited English proficiency, developmental delays, or family crisis.

Parent engagement is a key component in the program. The program is at no cost to families and provides 1/3 of a child's daily nutritional requirement in the part-year programs and 2/3 in the full year programs.

Highlights of Children Served and Program Staff

- ✚ **0-3 Children served:** 202 (2009) 252 (2010)
- ✚ **3-5 Children served:** 636 (2009 & 2010)
- ✚ **SEK-CAP 0-3 Staff:** 12 Teachers, 6 Assistant Teachers, 3 Family Support Workers
- ✚ **SEK-CAP 3-5 Staff:** 30 Teachers, 24 Assistant Teachers, 5 Family Service Workers
- ✚ **SEK-CAP Home-Based 0-3 Staff:** 22 Home-Based Educators and 3 Home-Based Supervisors (0-5)
- ✚ **SEK-CAP Home-Based 3-5 Staff:** 10 Home-Based Visitors
- ✚ **Other Early Childhood Staff**
 - ✓ Early Childhood Education Coordinator (0-3)
 - ✓ Child Development Supervisors
 - ✓ 1 Early Childhood Mental Health Consultant

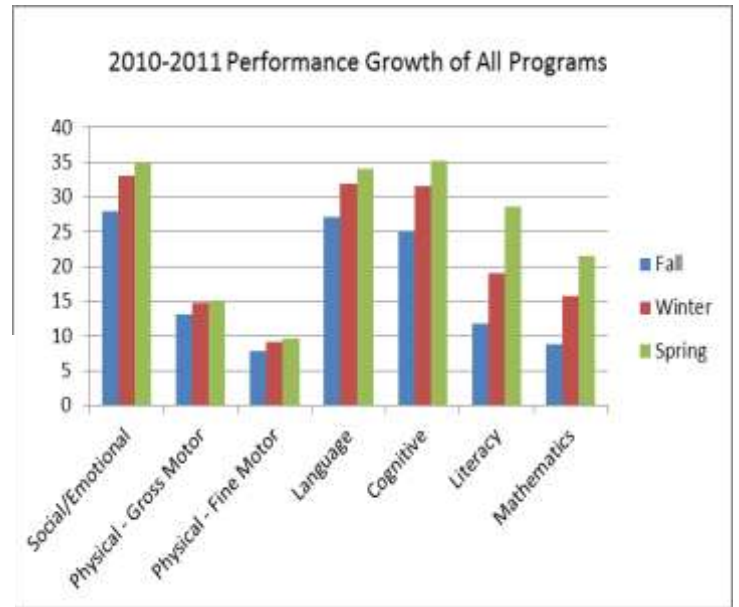
Indicator	Head Start		Early Head Start	
% of children up to date on a schedule of preventive and primary health care per the State's EPSDT schedule	730	88%	354	74%
% of children diagnosed as needing medical treatment	23	3%	9	2%
% of children receiving medical treatment	23	100%	9	100%
% of children with up-to-date immunizations or all possible immunizations to date	738	89%	366	77%
% of preschool children completing professional dental exams	598	72%	n/a	n/a
% of preschool children needing professional dental treatment	144	24%	n/a	n/a
% of preschool children receiving dental treatment	64	44%	n/a	n/a
% of preschool classroom teachers that meet degree/credential requirements of Section 648A, (2)(A) that become effective September, 2013	30	100%		
% of preschool classroom teaching assistants that meet degree/credential requirements of Section 648A, (2)(B)(ii) that become effective September, 2013	24	88%		
% of preschool classroom educational coordinators that meet degree/credential requirements of Section 648A, (2)(B)(i) that become effective September, 2013	3	100%		
% of preschool classroom teachers that meet degree/credential requirements of Section 648A, (3)(B) that become effective October, 2011	30	100%		
% of preschool classroom teachers that meet the current degree/credential requirements of Section 648A(3)(A)	30	100%		
% of Early Head Start classroom teachers that meet the degree/credential requirements of Section 645A(h) that become effective September, 2010			12	100%

SEK-CAP, Inc. Head Start and Early Head Performance Indicators



The graph at the right indicates that children in SEK-CAP early childhood programs made progress in all domains of measure growth.

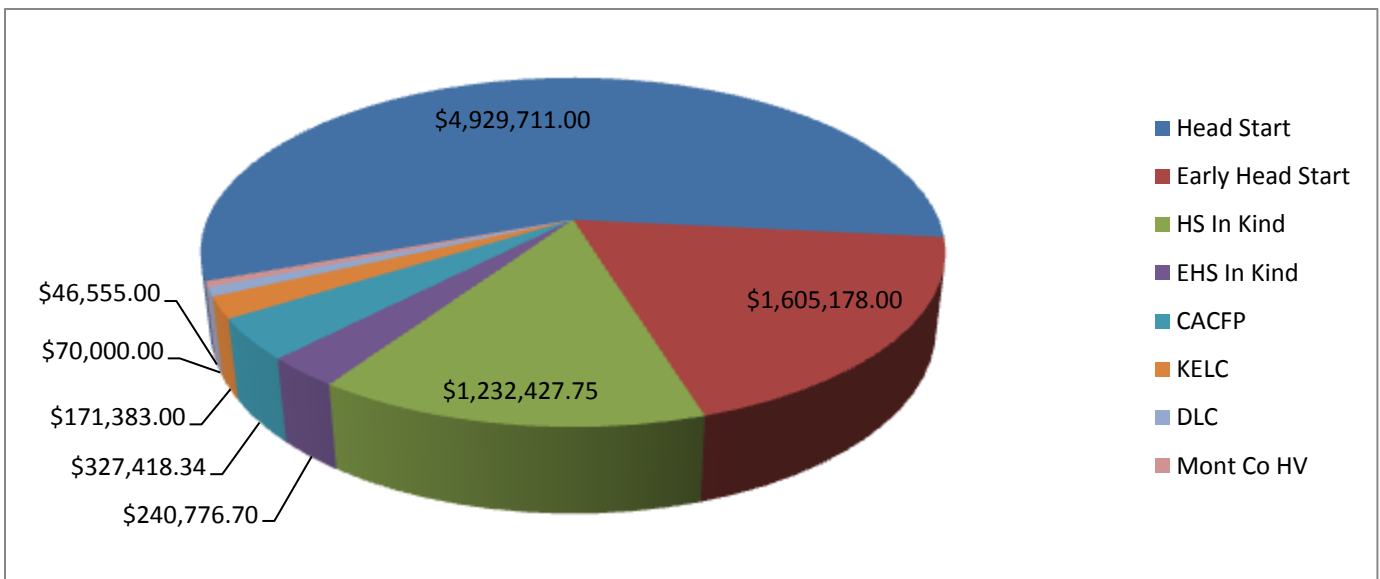
This growth was especially strong in the areas of Social-Emotional, Language, Cognitive, Literacy, and Mathematics.



Funding from the Office of Head Start and the State of Kansas

Funding Source	Funding Amount
Head Start	\$4,929,711.00
Early Head Start	\$1,605,478.00
Head Start In-Kind	\$1,232,427.75
Early Head Start In-Kind	\$ 240,776.70
CACFP	\$ 327,418.34
KELC	\$ 171,383.00
DLC	\$ 70,000.00
Montgomery County HV	\$ 46,555.00

Total \$8,623,449.79





Board of Directors

Autumn Adair	Stacey Burk
Mary Gilpin	Joe Grisolano
Boyd Koehn	Vicki Leonard
Sharon Morey	Chiqui McSherry
Ed Viers	Kurtis Loy – Legal Council



Policy Council

Rodney Andres	Heather Bauer	Misty Bennett	CW Betz
DeAnne Binns	Jessica Blevens	Alicia Bryant	Courtney Freeman
Deidre Green	Erica Hasler	Heather Herring	Sarah Ince
Annette Killman	Lisa King	Kay Koehn	Boyd Koehn
Dorothea Ledford	Tim Lloyd	Michelle Lockhart	Missy McAdams
Chiqui McSherry	Michelle Miller	Gabrielle Pagacz	Denarae Pecha
Mindy Rivers	Jean Ann Routh	April Slimp	Ashley Speaks
Amanda Tompkins			